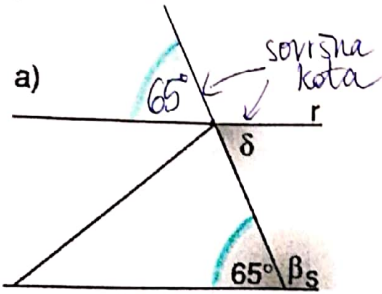


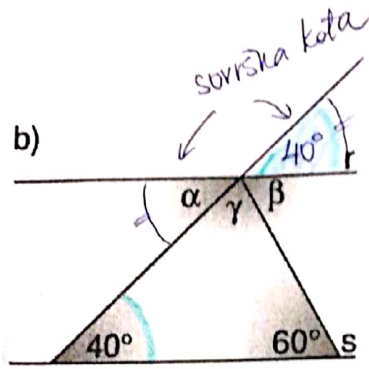
RAČUNANJE NEZNANIH KOTOV – UTRJEVANJE

1) Izračunaj neznane kote.



$$\beta = 180^\circ - 65^\circ = 115^\circ$$

$$\delta = 65^\circ$$

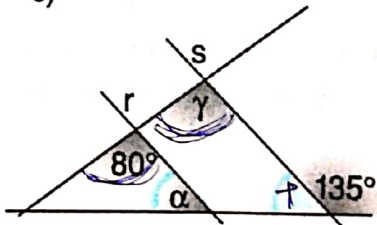


$$\gamma = 180^\circ - 40^\circ - 60^\circ = 80^\circ$$

$$\alpha = 40^\circ$$

$$\beta = 180^\circ - \alpha - \gamma = 180^\circ - 40^\circ - 80^\circ = 60^\circ$$

c)

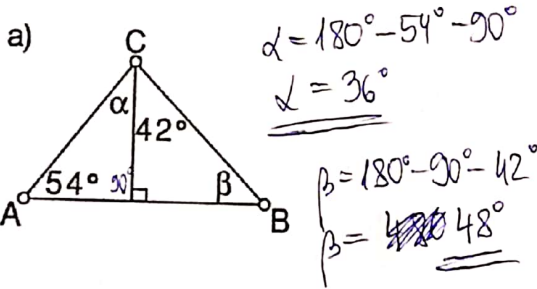


$$\gamma = 80^\circ$$

$$\rho = 180^\circ - 135^\circ = 45^\circ$$

$$\alpha = \rho \rightarrow \alpha = 45^\circ$$

2) Izračunaj neznane kote.

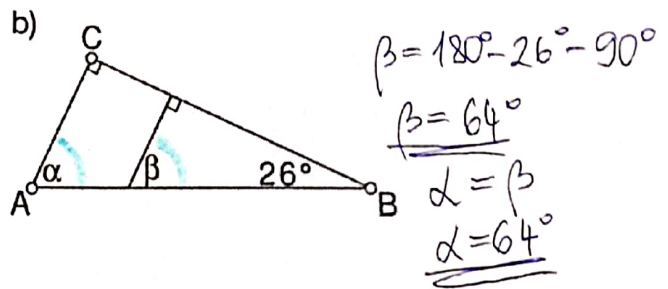


$$\alpha = 180^\circ - 54^\circ - 90^\circ$$

$$\alpha = 36^\circ$$

$$\beta = 180^\circ - 90^\circ - 42^\circ$$

$$\beta = 48^\circ$$

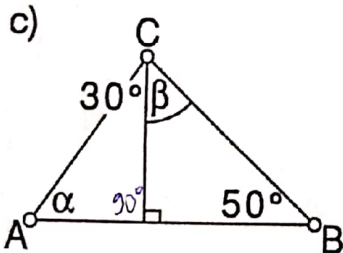


$$\beta = 180^\circ - 26^\circ - 90^\circ$$

$$\beta = 64^\circ$$

$$\alpha = \beta$$

$$\alpha = 64^\circ$$

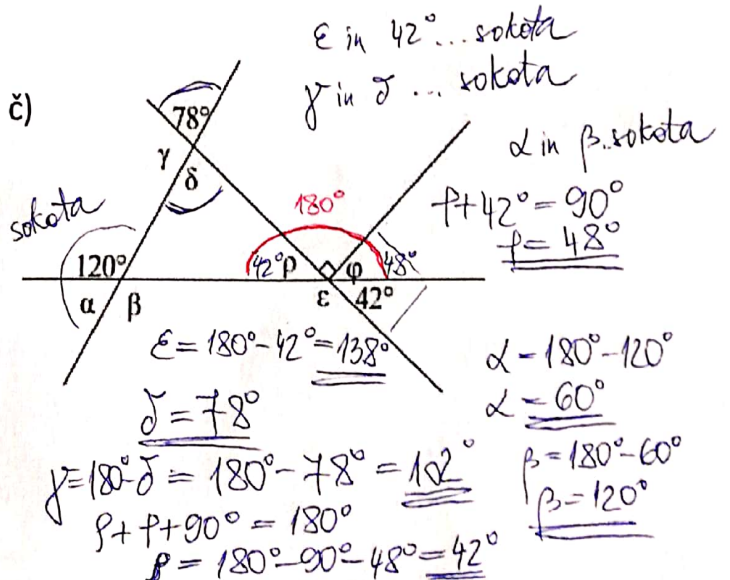


$$\alpha = 180^\circ - 90^\circ - 30^\circ$$

$$\alpha = 60^\circ$$

$$\beta = 180^\circ - 90^\circ - 50^\circ$$

$$\beta = 40^\circ$$



E in 42° ... sokota
gamma in delta ... sokota
alpha in beta ... sokota

$$\rho + 42^\circ = 90^\circ$$

$$\rho = 48^\circ$$

$$\epsilon = 180^\circ - 42^\circ = 138^\circ$$

$$\delta = 78^\circ$$

$$\gamma = 180^\circ - \delta = 180^\circ - 78^\circ = 102^\circ$$

$$\rho + \rho + 90^\circ = 180^\circ$$

$$\rho = 180^\circ - 90^\circ - 48^\circ = 42^\circ$$

$$\alpha = 180^\circ - 120^\circ$$

$$\alpha = 60^\circ$$

$$\beta = 180^\circ - 60^\circ$$

$$\beta = 120^\circ$$